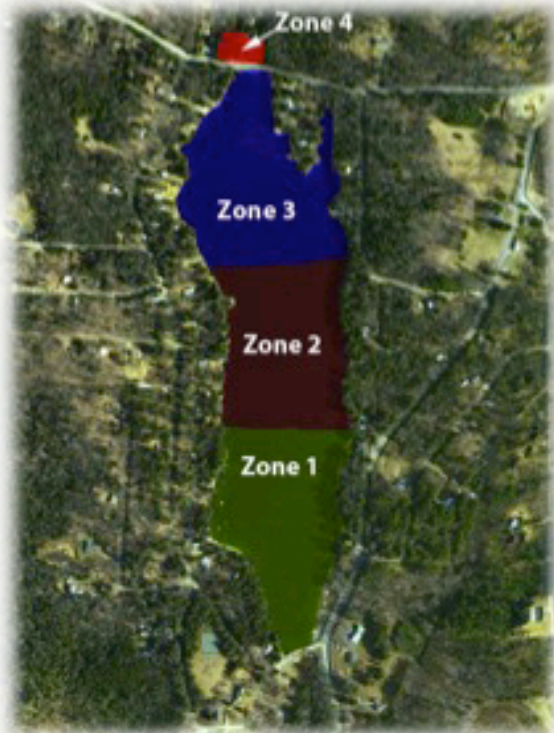


Welcome to Hammond Pond!

This pamphlet is designed to make identifying aquatic macrophytes (plants) found in Hammond Pond easy and enjoyable. It is very important to preserve the native plant diversity as it serves many important functions including; fish and wildlife habitat, food, sediment stabilization, nutrient cycling, and water clarity control.

Hammond Pond has been sectioned into four zones. Each macrophyte image includes the zone where it was most commonly located during a 2009 and 2011 sampling excursion. While these zones are a good starting point, some plants can be found outside of the described zones in lower and patchy abundance.



Nonnative Species

Currently, only native macrophytes have been sampled from Hammond Pond. However, the possibility exists that nonnative species will make their way into the pond. If you see any of the macrophytes pictured below, or are suspicious that nonnative plants are present, please contact:

Massachusetts Department of
Conservation and Recreation (DCR)
Phone: 1-617-626-1250
www.mass.gov/dcr

Lakes and Ponds Program
www.mass.gov/lakesandponds
Phone 1-617-626-1382



Hammond Pond

A Guide to Identifying Aquatic Plants



Westfield
STATE UNIVERSITY
— Founded 1838 —

Westfield State University
Biology Department
577 Western Ave
Westfield MA 01085
413.572.5302

Hammond Pond Aquatic Plant Life

Watershield

Brasenia schreberi



- Zone 1
- Zone 2
- Zone 3
- Zone 4

Floating-leaved

Broadleafed plant which is distinguished by the mucus found underneath its leaves.

Water Celery

Vallisneria americana

- Zone 2

The long ribbon like leaves on this plant have a plastic like appearance.



Submerged

Bur-reed

Sparganium eurycarpum

- Zone 1
- Zone 3
- Zone 4



Emergent

This tall stalk like rigid plant is unique because of the small burrs attached to it.

Bulrush

Scirpus sp.

- Zone 1
- Zone 2
- Zone 3
- Zone 4



Emergent

This tall plant has a firm stem with small spikelets at the top.

Floating-leaf pondweed

Potamogeton natans



Submerged

- Zone 1
- Zone 2
- Zone 3
- Zone 4

While most of this plant is found submerged, a small leaf is found above water, with a budding flower.



Submerged

- Zone 1
- Zone 3
- Zone 4

Bladderwort

Utricularis vulgaris

This plant has small flowers which can be purple, white or yellow, and has chambers in the submerged portion that look like tiny nets.

Cattail

Typha sp.

- Zone 2
- Zone 3



Emergent

This long, stalky plant can be easily identified by its cat-tail like flower. It looks very similar to Bur-Reed.

Yellow Water Lily

Nuphar sp.

- Zone 4



Floating-leaved

You can identify this plant from its large lily pad leaf, and its large bright flower.

Waterweed

Elodea sp.

- Zone 1



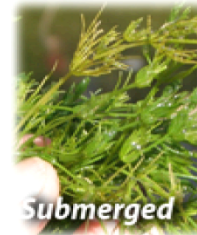
Submerged

This plant is found completely submerged, and is often used in aquariums.

Muskgrass

Chara sp.

- Zone 2
- Zone 3



Submerged

This algae grows in dense mats, and is characterized by its serrated edges and its distinct garlic, skunk like odor.

Leafy Pondweed

Potamogeton foliosus

- Zone 4



Submerged

This plant has delicate hair-like leaves that taper to a point, and can grow up to 10cm long.